



[Support Center](#) > [Community](#) > [Debugging](#) > [Assistance Needed with Debugging ARM Core on Infineon TC375TP Microcontroller](#)

Assistance Needed with Debugging ARM Core on Infineon TC375TP Microcontroller **Awaiting Agent**

- GM Ginto Martin
- **Forum name:** #Debugging

Hi everyone,

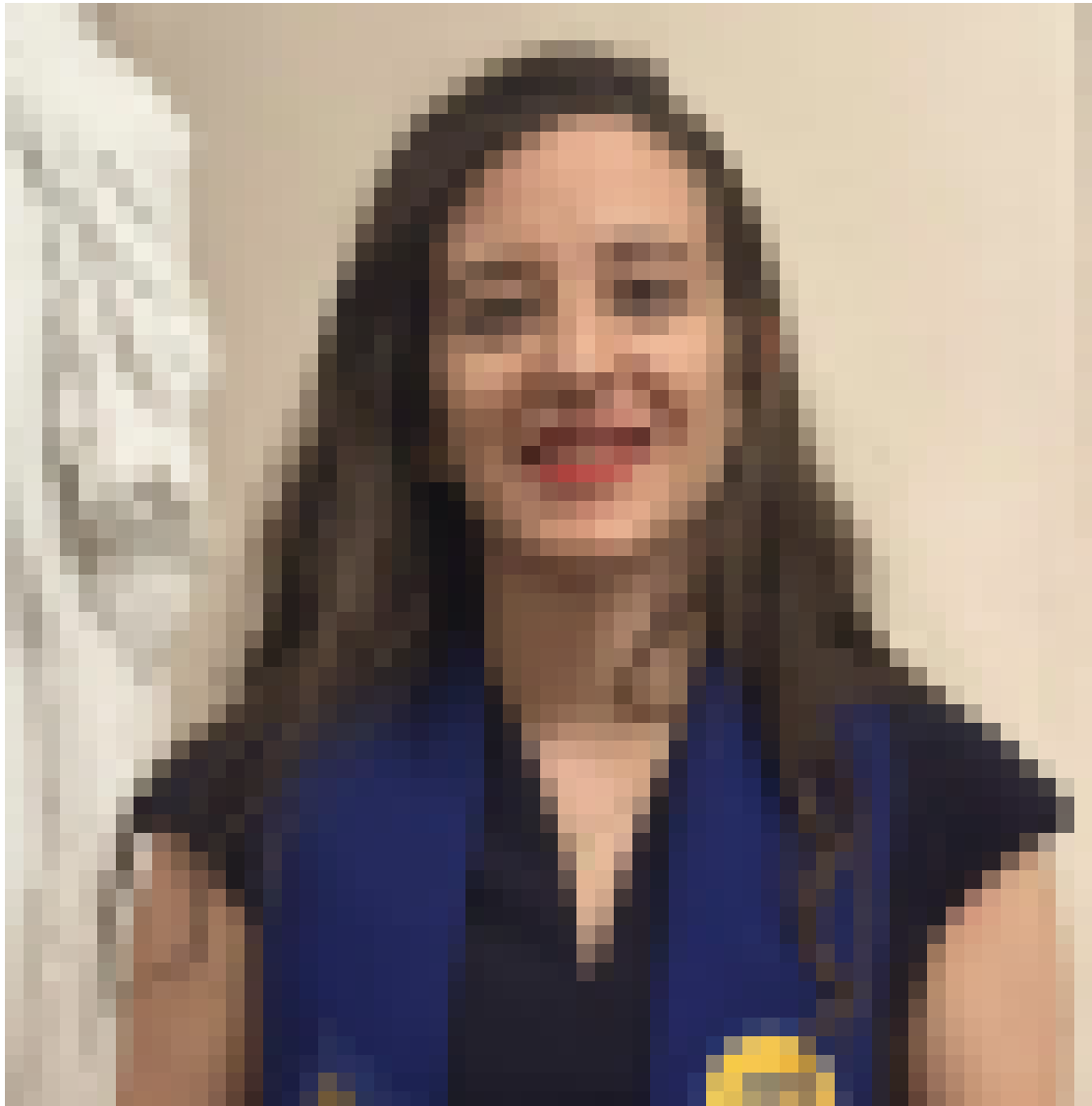
I'm currently working on a project involving the HSM in the Infineon TC375TP microcontroller. I have successfully enabled the HSM features using the available documentation and demo code, and I can confirm that the HSM features are working as expected, indicating that the ARM core is running successfully in the backend.

However, I'm encountering a problem when trying to access the ARM core through Trace32. I receive the following error message: "debug port type DAP2 not usable for this connector/CPU!" While the TriCore window works without issues, showing "system ready" when I click on Mode - Up after selecting the CPU and core, I am unable to debug the ARM core.

Could anyone provide guidance on what might be causing this issue? Is there any configuration I might be missing to activate the ARM core? Any help to resolve this and enable parallel debugging for the HSM would be greatly appreciated!

Thank you in advance for your assistance!

Comment (1)



**Ghaya Mehdi**

6 months ago

Please generate a system information report about your TRACE32 configuration by selecting the TRACE32 menu 'Help' > 'Support' > 'System Information...', click 'Save to File' and send the resulting text file as an attachment to your ticket when submitting the request on <https://support.lauterbach.com>