



[Support Center](#) > [Community](#) > [Debugging](#) > [T32 run time measures on virtual target](#)

T32 run time measures on virtual target **Awaiting Agent**

- H HUGUET
- **Forum name:** #Debugging

Hello

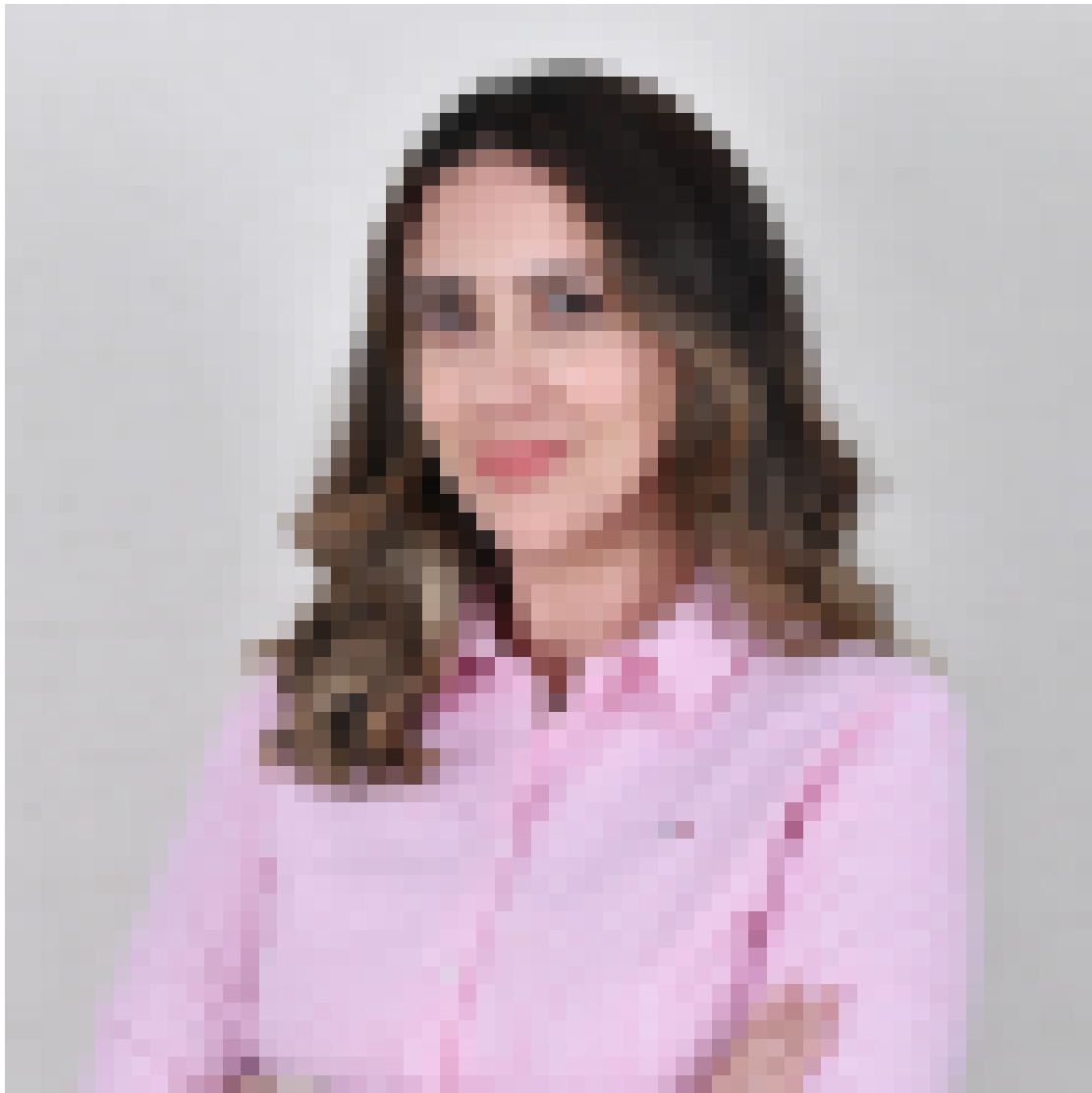
I am running embedded software on a virtual platform using T32 CADI interface to arm fast models.

I would like to know how to easily measure the execution runtime of my embedded software between the simulation start and some breakpoint in the code. The RunTime command documentation is a little bit complex and I'm not sure how to do that easily

Many thanks for your support

Best regards

Comment (1)



Lella Aicha Ayadi

4 months ago

Hello,

It is not possible to measure the runtime execution using the RunTime command group if you are using the CADI interface to Arm Fast Models. As you may already know, the CADI is considered obsolete by Arm.

However, this is possible for Iris interface. The RunTime command group may be used to measure the real-time runtime execution, which is measured by TRACE32 host S/W itself. Below is an example script (to be used with Iris interface) to measure the runtime of the function sieve:

```
Break.Delete
```

```
;set up counter start / stop events
```

```
Break.SetFunc sieve /SP0T
```

```
; Prepare RunTime recording
```

```
RunTime.OFF
```

```
; Display the results  
RunTime.STATistic.Func
```

```
; Run the program execution, e.g. for three seconds
```

```
Go
```

```
Wait 3.s
```

```
Break
```

```
Regards,
```

```
Aicha
```