



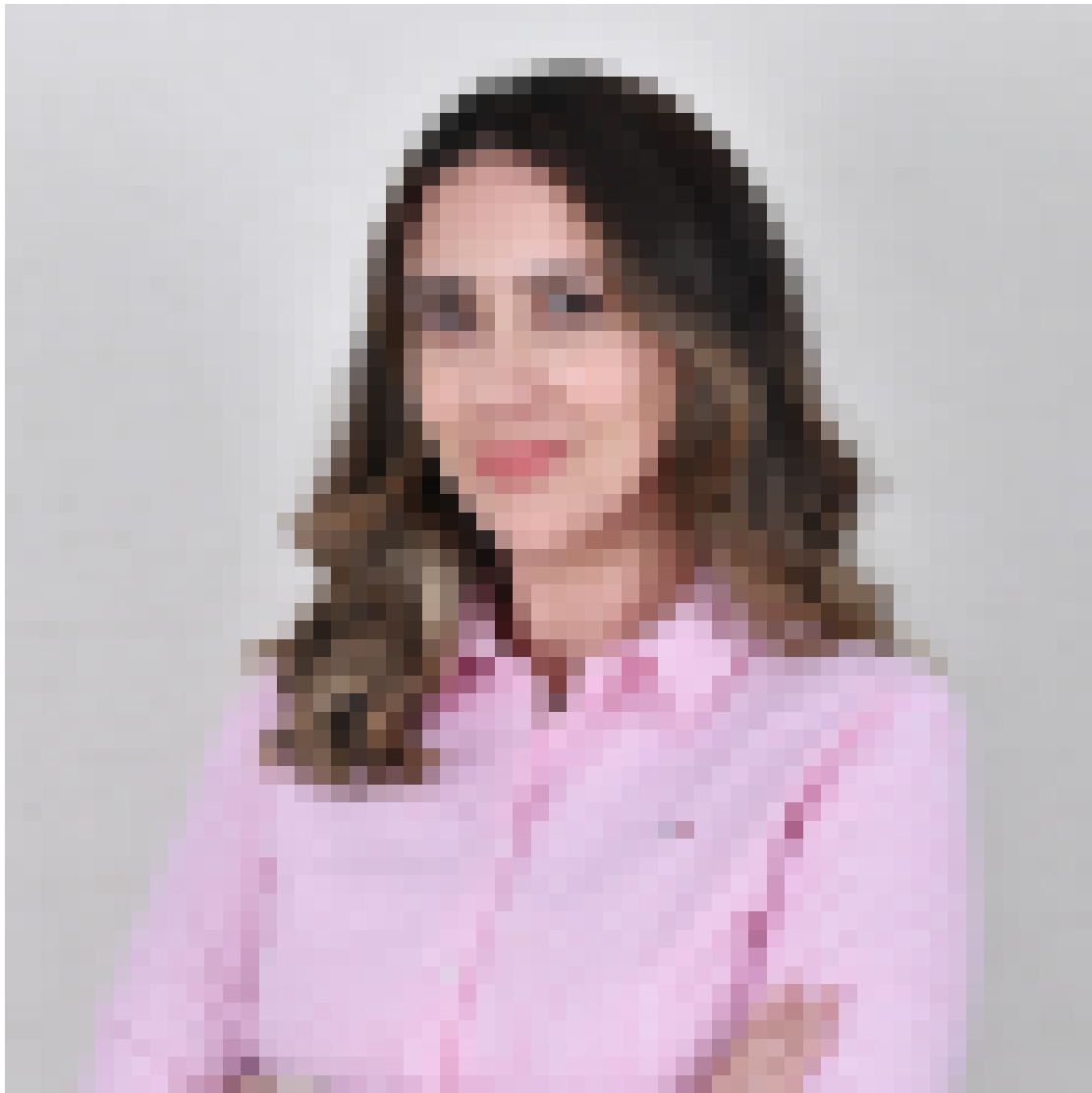
[Support Center](#) > [Community](#) > [Debugging](#) > [Why doesn't T32 stop when loading .elf](#)

Why doesn't T32 stop when loading .elf **Awaiting Agent**

- RC Richard Chen
- **Forum name:** #Debugging

T32 has always stopped at reset vector when I load an .elf file, however I have a case right now if I make a specific application change (not related to vector table) , T32 runs directly and reports "Running(core power down)" status, if I comment out the change, T32 stops as usual, the change I made is on the application level, how is D.Loading process sensitive to the .elf itself?

Comments (3)



**Lella Aicha Ayadi**

7 months ago

Hello Richard,

The "running (core power down)" state means that the core is powered down. Other cores may not be affected. The state is checked by reading the CPUID register of the Cortex-M core. If reading this register returns an error or an invalid value, then this state is displayed.

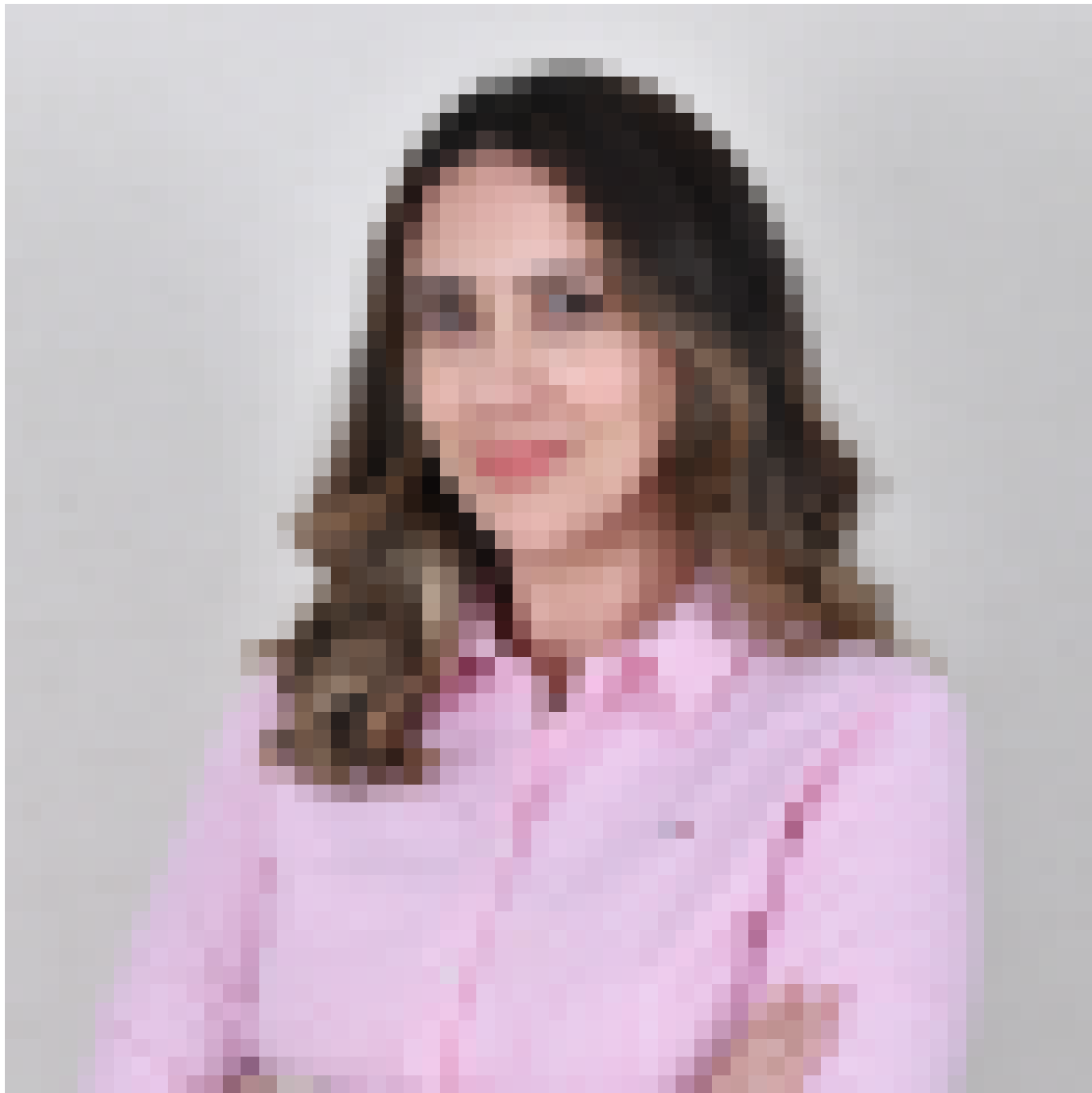
Regards,

Aicha

**RC Richard Chen**

7 months ago

Thank you Lella, it seems that my application change causes this state to be shown, not sure exactly why though, Regards Richard



**Lella Aicha Ayadi**

7 months ago

Hello Richard,

We can investigate better if you can share the code change and the script that you are using.

Please send an e-mail to "[support@lauterbach.com](mailto:support@lauterbach.com)" with the information requested.

Please generate a system information report about your TRACE32 configuration by selecting the TRACE32 menu 'Help' > 'Support' > 'System Information...', click 'Save to File' and send the resulting text file as an attachment to your e-mail.

Regards,

Aicha