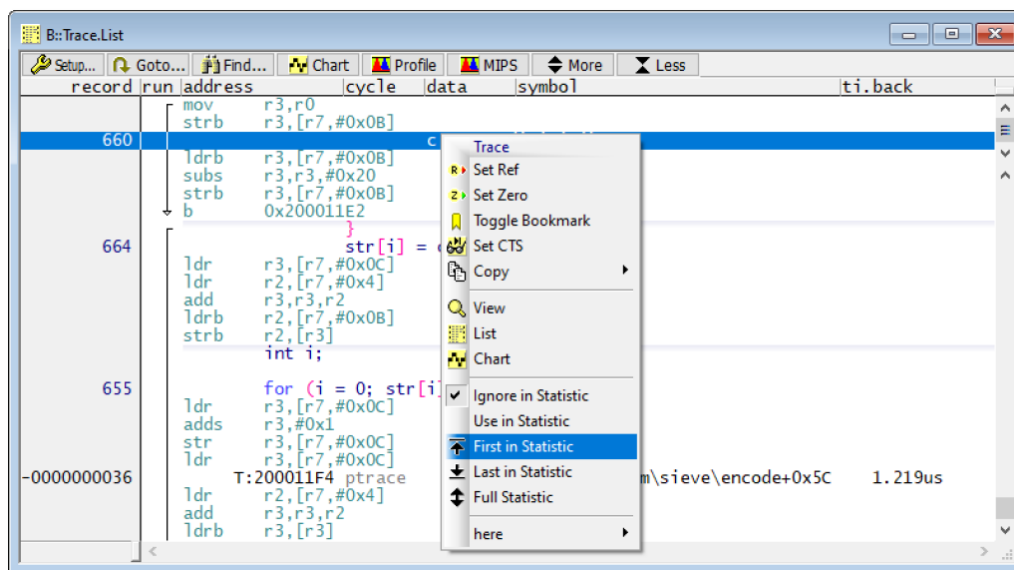


Knowledgebase > Tracing > How can I perform trace statistic analysis between two specific points of a trace recording?

## How can I perform trace statistic analysis between two specific points of a trace recording?

2023-10-25 - Comments (0) - Tracing

You can select a start point and an end point using right mouse click inside a **Trace.Chart** or **Trace.List** window and select "**First in Statistic**" and "**Last in Statistic**".



The corresponding TRACE32 commands are **Trace.STATistic.FIRST** and **Trace.STATistic.Last**.

The **Trace.STATistic** commands will then only analyze the selected part of the trace between "First" and "Last", and not the complete trace content.

Please refer to the description of these commands in [General Command Reference Guide T](#) for more information.