



[Knowledgebase](#) > [Setup / update](#) > [What is the difference between the operation modes "TRACE32 Simulator" and "TRACE32 Viewer"?](#)

What is the difference between the operation modes "TRACE32 Simulator" and "TRACE32 Viewer"?

2026-01-19 - [Comments \(0\)](#) - [Setup / update](#)

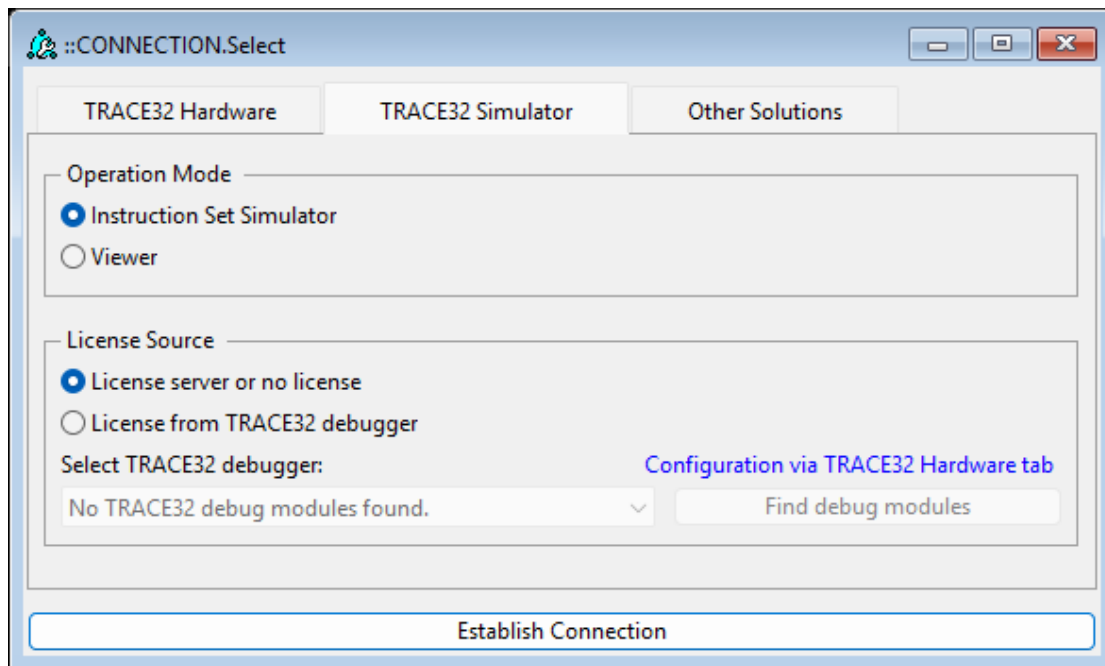
TRACE32 Simulator

- Provides a built-in **Instruction Set Simulator**.
- Allows you to **load and execute programs** (e.g., ELF files) directly in the simulator.
- Useful for **simulating program execution** without requiring target hardware.

TRACE32 Viewer

- Designed for **off-line analysis**.
- Supports loading **programs, memory dump files, and trace recordings**.
- Enables reconstruction of a **saved target state** without hardware.
- Does **not support program execution**. Commands such as *Go*, *Break*, and *Step* are unavailable in this mode.

You can select between the TRACE32 Simulator or Viewer operation modes using the **Connection Select Dialog**:



For further details, refer to the [PowerView Command Reference](#)